

Ridgefield
Guild
of Artists INC.

NEWSLETTER

S P R I N G * 2 0 0 4

P.O. Box 552 Ridgefield, CT 06877 | 203.438.8863 | www.rgoa.org

DATE CHANGES FOR UPCOMING SHOWS

As events unfold during the year, we've made some small changes to the Exhibits schedule. Please mark your calendar for receiving and pickup dates; most importantly, for opening reception dates and times.

WINNERS CIRCLE

Award Winners from the 26th Annual Juried Exhibition.

New opening reception: Saturday, March 27th,
4:00 p.m. – 6:00 p.m.

SPECIAL WEEKEND SOLO EXHIBIT

Sonia Small, sponsored by Bernard Frazier of USB.

Show runs Friday, April 30th – Sunday, May 2nd
Opening reception is April 30th 6:00 p.m. – 8:00 p.m.

STUDENT & FACULTY SHOW

RGA instructors and students from the 2003-2004 school year.

New dates are May 8th – May 20th
Opening reception is Saturday May 8th, 2:00 p.m. – 4:00 p.m.
Receiving dates are as follows: Sunday, May 2nd,
5 p.m. – 6 p.m.; Monday, May 3rd,
10 a.m. – 2 p.m.; Tuesday, May 4th, 6 p.m. – 8 p.m.

Note: due to the interior renovation slated for all of May, the Student & Faculty Show will be held in our third gallery. Each student and instructor will receive a memo with more information. All our encouraged to participate!

INNER AND OUTER LANDSCAPES

A group exhibit of international artists, curated by RGA member, Phil Demise Smith:

Opening reception is Sunday, June 6th, 2:00 p.m. – 4:00 p.m.

To date, there are no changes in the schedule for shows, other than those listed above.



Upcoming Events *Art & Craft Show Time!*

This is a big deal for RGA because these events in Ballard Park are RGA's "bread and butter!" This is where most of our money comes from. They are far and away our most important fundraisers.

Serendipity is on May 2nd this year, the Sunday before Mother's Day, as has become customary. **Art in the Park** is on August 22nd. Please put these events on your calendar now.

It's becoming common knowledge that **Serendipity** and **Art in the Park** are art and craft shows where the art and crafts happen "on the spot!" We will have painters painting, potters potting, quilters quilting, and more. Carrying on what we hope will become a tradition, we are planning to offer several FREE art classes to children ages 4-14 in the Park Gazebo during these events. The idea of the art and the craft demonstrations and the free art classes is to make the events unique and interesting to the public and to promote the Guild's art class curriculum, which needs promotion since enrollment is not as strong as it has been in the past.

Serendipity and **Art in the Park** are monster events! Huge! They require extraordinary organization and coordination: Soliciting and screening exhibitors, processing exhibitor applications, coordination with the Dept. of Parks & Rec., advertising & promotion (big!), signage, and managing the events themselves. This is a great place to volunteer folks!!!

Member News

Connie Freid's solo-show, *Dreams and Destinies*, took place at the Harrison Library. She also had work juried into The Contemporary Portrait at the Rye Arts Center; Viewpoints at the Northern Westchester Center for the Arts; the Allied Artists of America Exhibit at the National Arts Club; the Katonah Museum Artists Show at the Northern Westchester Center for the Arts and the RGA exhibit. Her work is currently on view at the White Plains library with the Mainstream Studio Artists.

Works by RGA members Wayne Chou, Willard Doyle, Mary Green LaForge, Gillian Marshall, and Paula Renée will be on exhibit with the RGA's Satellite Gallery Program, sponsored by the Ridgefield Community Center. The show, featuring acrylics, oil paintings, photography and watercolors, opened February 15th and will run through the end of April. The exhibit is at the Ridgefield Community Center on Main Street.

Mary E. Whitehill will be one of the featured artists an exhibit, *April Awakening*, at The Arts Alliance Cooperative Gallery in Cornwall, NY. The opening is April 3rd, 2 p.m. – 5 p.m.

Paula Renée's landscape paintings, woven paintings on canvas, as well as her gold-leaf and gouache on paper dimensional construction pieces, will be on exhibit at the Ridgefield Community Center. The show runs for three months and started in February.

Victor DeMasi, a new Guild member from Redding, has been chosen to demonstrate and exhibit his work at the *Salon Gathering* in Oslo, Norway the first week of June. Salon is an international guild of decorative painters who special-

President's Message

ON OUR 30TH ANNIVERSARY WE CAN ACKNOWLEDGE THAT THE GUILD HAS MADE ITSELF A MAINSTAY IN OUR COMMUNITY.

There are many new things happening at for us as well. The first of these is the many new members, new faces on our board of directors and a new coordinator.

There is a great deal of excitement at the Guild now. This is exemplified by the ongoing quality of our shows and new improvements to our gallery space.

Please be advised that we are ever-seeking suggestions from our members and all are welcome to attend our board meetings, which are usually the first Wednesday of every month. Feel free to check with me at 894-1312 to confirm.

Happy 30th Anniversary Guild!

Chris

VOLUNTEERING

An Excellent Opportunity to Volunteer. If you want to feel you are involved in a critical way with the Ridgefield Guild of Artists, helping to keep us healthy & solvent, please get involved with *Serendipity* and/or *Art in the Park*. The behind the scenes stuff starts in January every year, so NOW is the time to volunteer and take some responsibility. Please call Special Events Chairman, Larry Glaister: 860-350-3584.

ize in the decoration of buildings. Current members are working on projects that include Versailles Palace and Westminster Palace. DeMasi will exhibit Trompe l'oeil and mural techniques. He can be visited at the following web site: monarchpainting.net.

The Satellite Gallery is having a show and sale at the Hitchcock Home Furniture Store in Wilton. The exhibit will be for a two-week period beginning Saturday, April 3 with an opening from 2:30 p.m. to 5:30 p.m. The participating artists will be Sally Aldrich, Jerry Bisceglia, Ann Bridgman, Don Bruen, Michael Cave, Wayne Chou, Will Doyle, Connie Freid, Nancy Hayes, Julie Hopkins, Steffi Jones, David Kalman,

Ann Kromer, Ed Kruelski, Mary Green La Forge, Elisabeth Levy, Susan Margolis, Gillian Marshall, Paula Renee, Cindy Wagner, Mary Whitehall, and Gail Wildman. The artists will be present at the opening to introduce themselves and talk about their work. Over 150 pieces will be on exhibit and will be for sale. The work will include watercolors, pastels, oils, acrylics, photography, pottery, baskets, and sculpture. For further information please call Wayne Chou at (203) 438-1860, or the Hitchcock store in Wilton (203) 762-9594. The Hitchcock Gallery is located at 22 Danbury Road in Wilton, CT.



GALLERY NEWS

RGA Galleries Getting Full Makeovers



During January, Ridgefield-based builder, Christopher Curnan, put together a remarkable collection of donated materials, labor, and time to remodel our third gallery. The Guild owes many thanks to Chris, Ridgefield Supply, Mike Chamberlain and Coastal Painting, and GlenKar Flooring of Woodbury, CT. Thank you.

The month of May will bring true renewal to the Guild, as Curnan, Inc. works the same magic on our front and middle galleries that it has done

with the third. Walls, windows, doors and floors will undergo transformations to provide more exhibit space, with museum-quality ambiance and structure.

This new space is scheduled to be ready for our themed, Members' Show, *Where In The World?* It will be a perfect opportunity for all RGA members to enter work in the show and to attend the opening on Sunday, July 11th.

Satellite Gallery

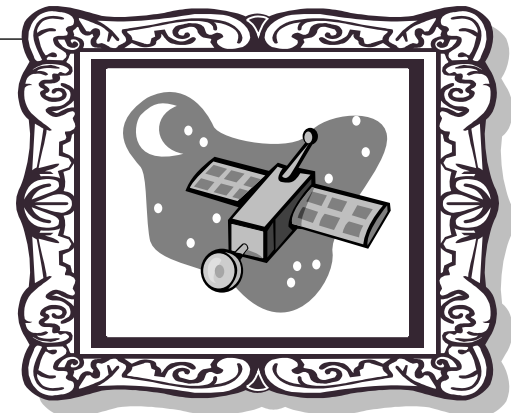
Show and sale at
Hitchcock Home Furniture Store in Wilton,
April 3rd – April 17th.

AS OF THIS WRITING, THERE WILL BE 22 OF THE 267 RGA MEMBERS WHO WILL BE DISPLAYING THEIR WORK. This will include oils, watercolors, photography, acrylics, mixed-media, sculpture, pottery, and baskets — collectively, over 150 pieces of artwork. The confirmed date for the opening is on Saturday, April 3, 2004, but the exact time has not been set. The show will be for a two-week period. Hitchcock has agreed to provide each of the artists with approximately 25 printed invitations that they can send out to their friends, etc. and they will send out approximately 8000 invitations to their own customer base. They will also provide refreshments at the reception which will be held at their store in Wilton on Rte 7 (near the Wilton/Norwalk line). They will also provide the necessary advertisement and promotional material. They would like the participating artists to be physically

present on the day of the reception (April 3). Naturally, all RGA members and friends are welcome to attend the reception and any time during the period of the show. While the

show may last only for a two-week period, there will definitely be a continuing momentum for the desirability of the artists' work. This will, therefore, be a great opportunity for anyone that participates in this event. This will be the eighth such SGP event and show since its inception by the Guild last year.

The SGP provides a way for RGA members to show their work through multiple venues, thus giving the members the opportunity for their work to gain more exposure as well as increasing the possibility of selling their work. There is no cost other than that of being a member of RGA. For more information on how you can participate in this program, please call the office at (203) 438-8863, or call Wayne Chou, SGP Director, at (203) 438-1860.



Newsletter Schedule

GUILD MEMBERS CAN EXPECT A QUARTERLY NEWSLETTER. There will be a Spring, Summer, Fall and Winter issue; March, June, September, December. Those members wishing to contribute will be able to make their submissions until the last day of the month prior to publication (i.e. February 28th/29th, May 31st, August 31st, and November 30th). Actual publication dates may vary within the months, dependant upon upcoming shows and importance of events.

FOR YOUR INFORMATION

Amy Bock, of A Bock Design, LLC and Aimee Perna, of Galleria d'Arte are doing the editing and layout of our RGA newsletter. We wish for everyone who chooses to contribute the opportunity to do so. Aimee Perna can be reached (and all written submissions sent to) at:
olivehunter2003@yahoo.com.

CALENDAR SPRING 2004

WINNER'S CIRCLE

Saturday, March 27th, Reception is 4:00 p.m. – 6:00 p.m.

SPECIAL WEEKEND SOLO EXHIBIT

Friday, April 30th – Sunday, May 2nd, Opening reception is
April 30th, 6:00 p.m. – 8:00 p.m.

SERENDIPITY

Sunday, May 2, Ballard Park – Ridgefield

STUDENT & FACULTY SHOW

Saturday, May 8th – Thursday, May 20th

INNER AND OUTER LANDSCAPES

International Exhibit, Opening reception is
Sunday, June 6th, 6:00 p.m. – 8:00 p.m.

MEMBER'S SHOW, "WHERE IN THE WORLD?"
July – 2004

Ridgefield Guild of Artists
PO Box 552
Ridgefield, CT 06877

UPCOMING EVENTS

MARCH

WINNER'S CIRCLE

APRIL

SPECIAL WEEKEND SOLO EXHIBIT

MAY

SERENDIPITY, STUDENT & FACULTY SHOW

JUNE

INNER & OUTER LANDSCAPES

See Calendar for times and dates

